

Suteksan

Egypt



Certificates



General Information

01

PUMPED LIQUIDS

Clean.

Thin.

non-aggressive liquids without solid particles or fibers.

The max. sand content is 50 mg/lit.

02

INTERNATIONAL CERTIFICATES

All products meet international standards.

ISO 5199:2003

ISO 2858:2010

ISO 9906:2012

ISO 9001:2015

CE

SASO

03

CURVE CONDITIONS

The performance curves show pump performance at actual speed cf. standard motor range.

The speed of the motors is approximate:

4" and 6" motors: $n=2870 \text{ min}^{-1}$

8" to 12" motors: $n=2900 \text{ min}^{-1}$

The measurements were made with airless water at a temperature of 30°C.

The colored section of the table indicates the recommended performance range.

The performance curves are inclusive of possible losses $\pm 5\%$.

Rewindable motor

Single-phase: 220 - 240V/50Hz

Three-phase: 380 - 415V/50Hz

Equip with start control box or digital auto-control box Pumps are designed by casing stressed

NEMA dimension standards.

General Information

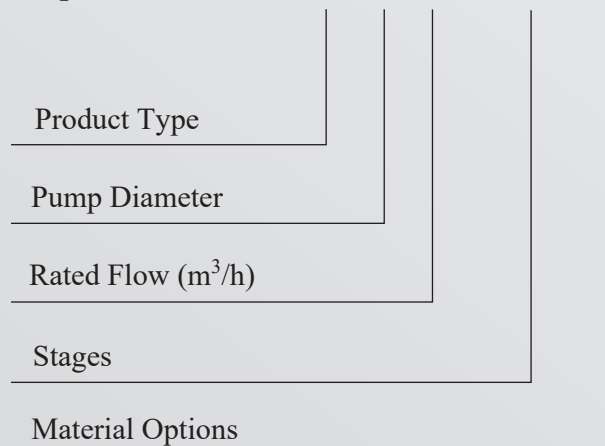
TYPE KEY



MODEL	SEP 8160 / 03 K		
H - M	96 - 67		
Q - m³/h	140 - 220		
HP	75	KW	55
Frequency	60 Hz		
Speed	3460 rpm		
S.N.	20XXXXXX-56XXX		

**STAINLESS STEEL SUBMERSIBLE PUMP
MADE IN EGYPT CE**

Example ——— SEP 8-160 / 03 - K



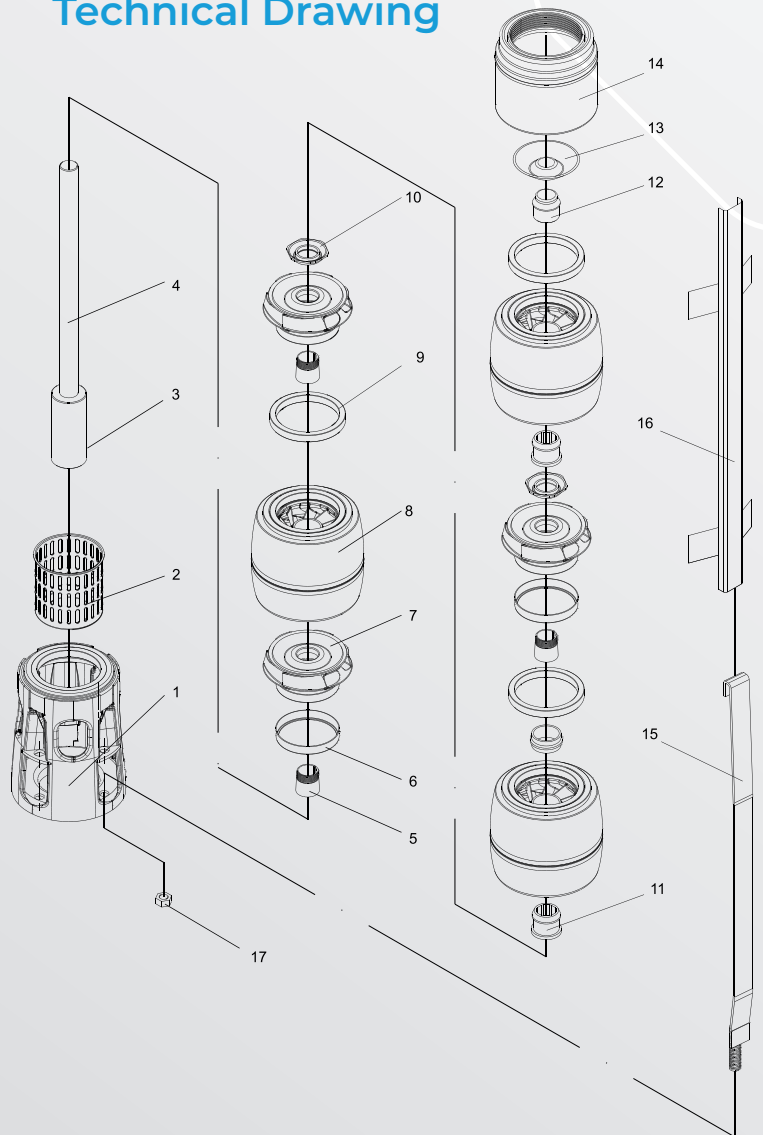
Material Data

Part List

N°	Part Name	Material
1	Suction Stage	Stainless Steel (AISI 304L)
2	Filter	Stainless Steel (AISI 304L)
3	Coupling	Stainless Steel (AISI 304L)
4	Pump Shaft	Stainless Steel (AISI 420 - 304L)
5	Impeller Lock	Stainless Steel (AISI 304L)
6	Impeller Rings	Stainless Steel (AISI 304L)
7	Impeller	Stainless Steel (AISI 304L)
8	Diffuser	Stainless Steel (AISI 304L)
9	Diffuser Ring	Rubber

N°	Part Name	Material
10	Nut For Impeller Lock	Stainless Steel (AISI 304L)
11	Shaft Bearing	Rubber
12	Shaft Stopper	Stainless Steel (AISI 304L)
13	Valve	Stainless Steel (AISI 304L)
14	Outlet	Stainless Steel (AISI 304L)
15	Strap	Stainless Steel (AISI 304L)
16	Cable Guard	Stainless Steel (AISI 304L)
17	Strap Nut	Stainless Steel (AISI 304L)

Technical Drawing



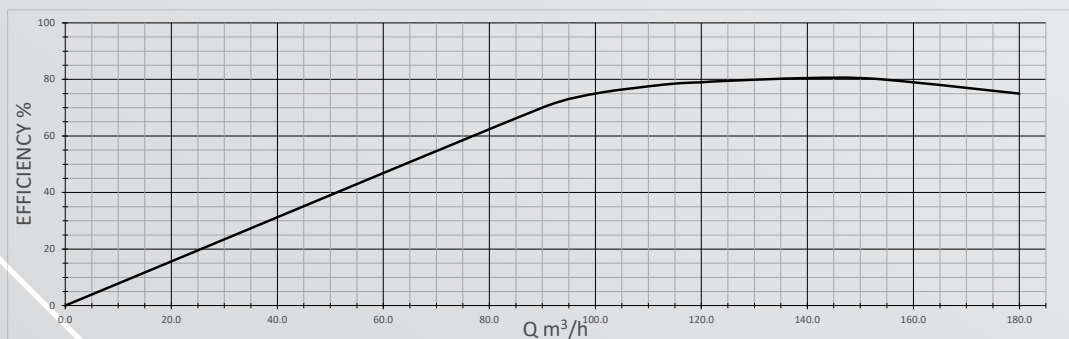
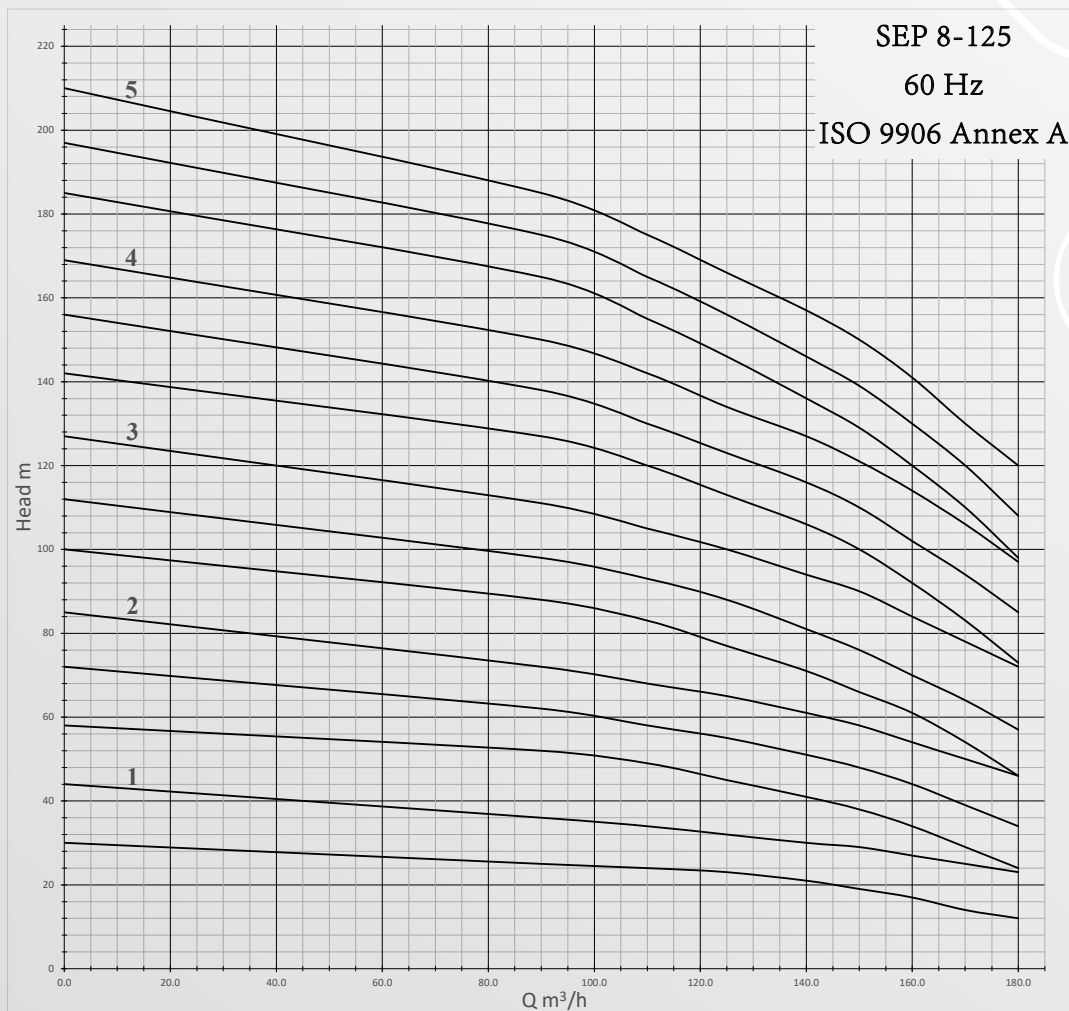
SEP 8" Pump Series



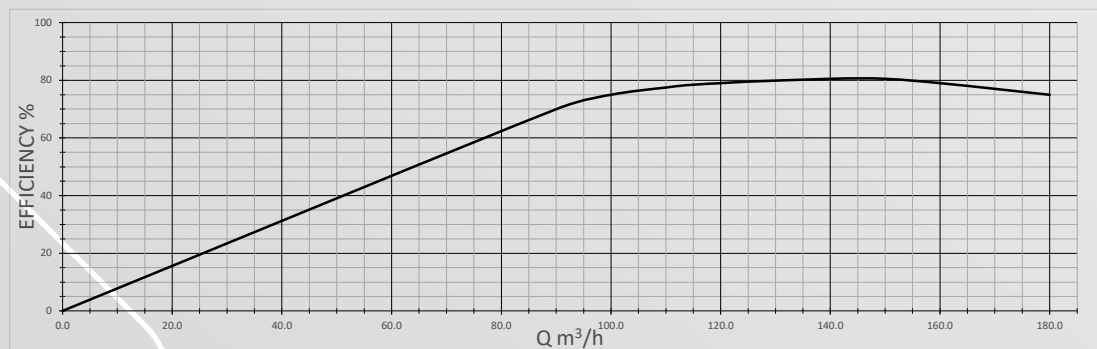
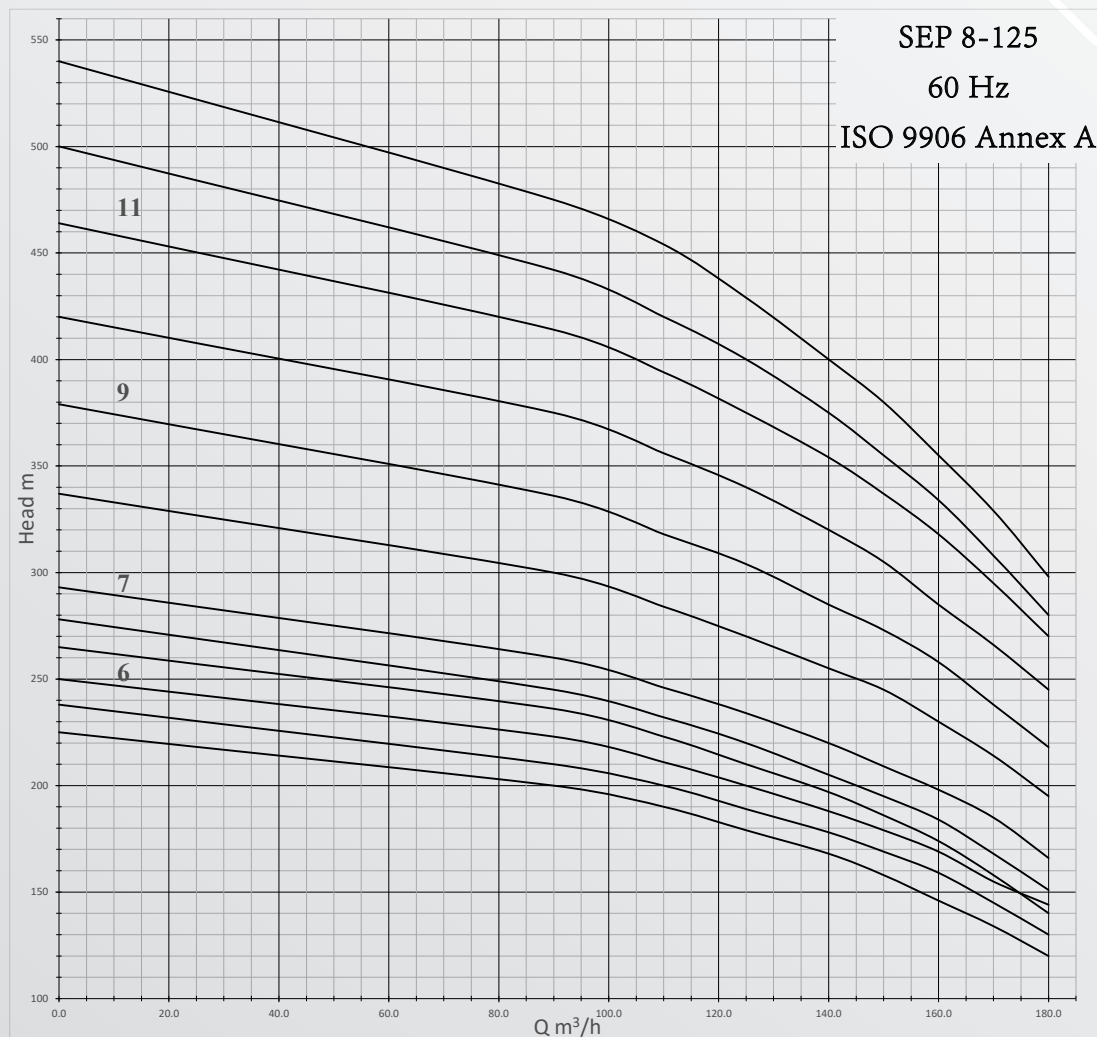
STAINLESS STEEL SUBMERSIBLE SEP 8-125 SERIES

Stainless Steel Submersible Pumps / SEP 8-125 Series														60 Hz	
Pump Type	power		Flow										Pump Weight	Pump length	Outlet
	Kw	Hp	m ³ /h	0.0	90.0	110.0	125.0	140.0	150.0	160.0	170.0	180.0			
	l/s	0.00	25.00	30.56	34.72	38.89	41.67	44.44	47.22	50.00	Kg	cm	Inch		
SEP 8-125/ 01/K	11	15	Head m	30	25	24	23	21	19	17	14	12	25	58	6"
SEP 8-125/ 01	18.5	25		44	36	34	32	30	29	27	25	23	25	58	
SEP 8-125/ 02/KK	22	30		58	52	49	45	41	38	34	29	24	32	74	
SEP 8-125/ 02/K	26	35		72	62	58	55	51	48	44	39	34	32	74	
SEP 8-125/ 02	30	40		85	72	68	65	61	58	54	50	46	32	74	
SEP 8-125/ 03/KK	37	50		100	88	83	77	71	66	61	54	46	39	90	
SEP 8-125/ 03/K	37	50		112	98	93	88	81	76	70	64	57	39	90	
SEP 8-125/ 03	45	60		127	111	105	100	94	90	84	78	72	39	90	
SEP 8-125/ 04/KK	55	75		142	127	120	113	106	100	92	83	73	46	105	
SEP 8-125/ 04/K	55	75		156	138	130	123	116	110	102	94	85	46	105	
SEP 8-125/ 04	63	85		169	150	142	134	127	121	114	106	97	46	105	
SEP 8-125/ 05/KK	75	100		185	165	155	146	136	129	120	110	98	53	121	
SEP 8-125/ 05/K	75	100		197	175	165	156	146	139	130	120	108	53	121	
SEP 8-125/ 05	75	100		210	185	175	166	157	150	141	130	120	53	121	
SEP 8-125/ 06/KK	75	100		225	200	190	179	168	158	146	134	120	60	137	
SEP 8-125/ 06/K	92	125		238	210	200	189	178	169	159	145	130	60	137	
SEP 8-125/ 06	92	125		250	223	211	200	188	179	169	155	144	60	137	
SEP 8-125/ 07/KK	92	125		265	236	223	210	197	186	174	158	140	67	152	
SEP 8-125/ 07/K	92	125		278	245	232	220	205	195	184	168	151	67	152	
SEP 8-125/ 07	110	150		293	260	246	234	220	209	198	185	166	67	152	
SEP 8-125/ 08	132	175	337	300	284	270	255	245	230	214	195	73	168		
SEP 8-125/ 09	132	175	379	336	318	304	285	273	258	238	218	80	184		
SEP 8-125/ 10	147	200	420	375	356	340	320	305	285	266	245	87	199		
SEP 8-125/ 11	170	230	464	414	394	375	354	337	318	295	270	94	215		
SEP 8-125/ 12	185	250	500	442	420	400	375	355	334	308	280	101	231		
SEP 8-125/ 13	185	250	540	475	454	429	400	380	355	329	298	108	247		

STAINLESS STEEL SUBMERSIBLE SEP 8-125 SERIES



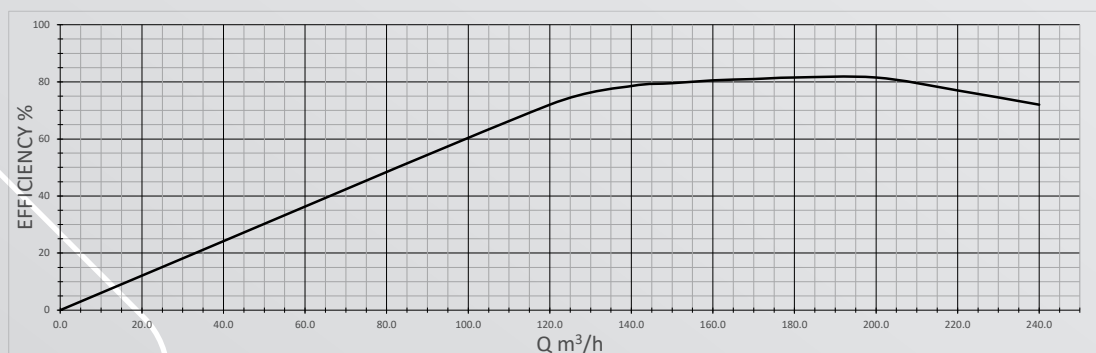
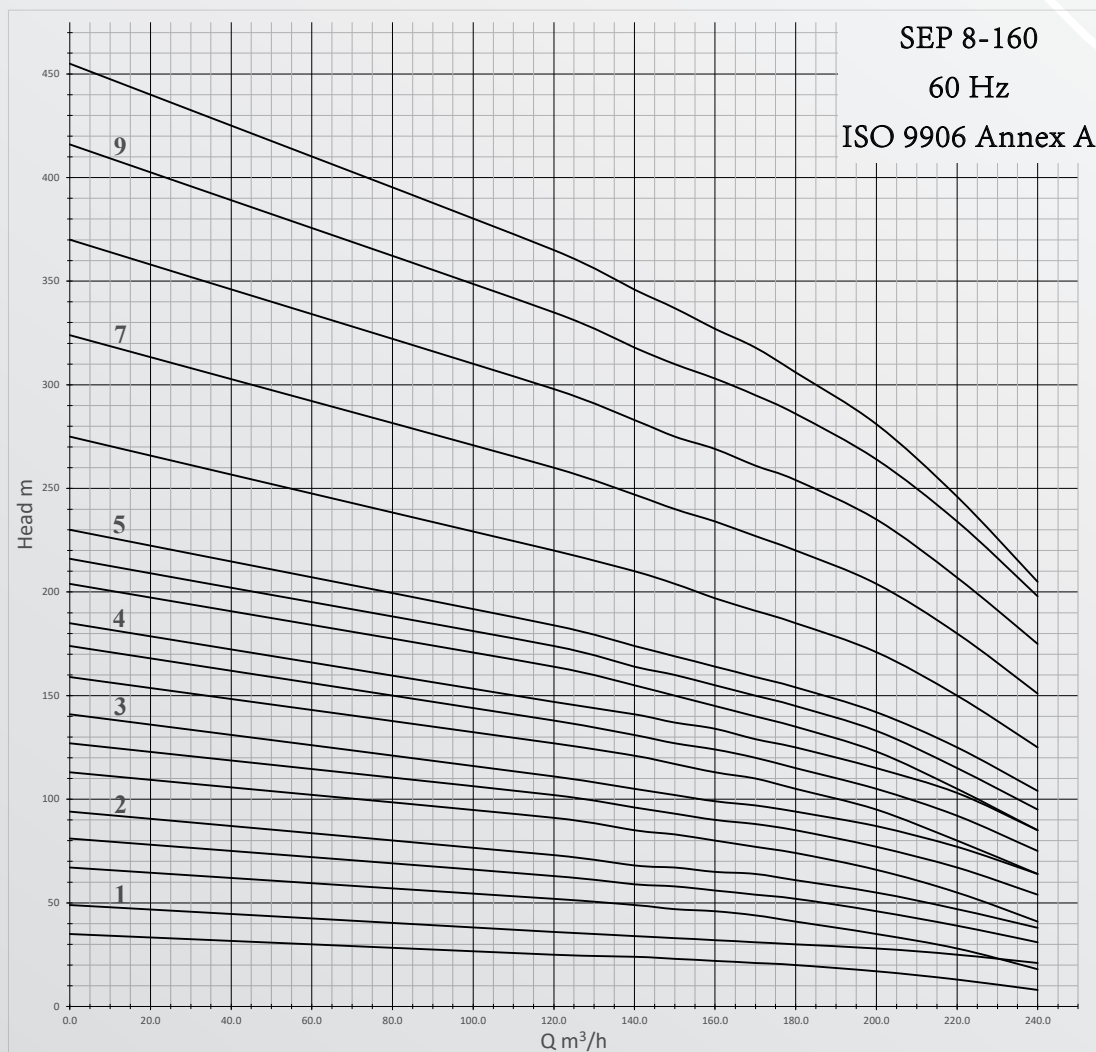
STAINLESS STEEL SUBMERSIBLE SEP 8-125 SERIES



STAINLESS STEEL SUBMERSIBLE SEP 8-160 SERIES

Stainless Steel Submersible Pumps / SEP 8-160 Series															60 Hz	
Pump Type	power		Flow										Pump Weight	Pump length	Outlet	
	Kw	Hp	m ³ /h	0.0	120.0	140.0	150.0	160.0	170.0	180.0	200.0	220.0	240.0	Kg	cm	Inch
			l/s	0.00	33.33	38.89	41.67	44.44	47.22	50.00	55.56	61.11	66.67			
SEP 8-160/ 01/K	15	20	Head m	35	25	24	23	22	21	20	17	13	8	25	58	6"
SEP 8-160/ 01	22	30		49	36	34	33	32	31	30	28	25	21	25	58	
SEP 8-160/ 02/KK	26	35		67	52	49	47	46	44	41	35	28	18	32	74	
SEP 8-160/ 02/K	37	50		81	63	59	58	56	54	52	46	39	31	32	74	
SEP 8-160/ 02	37	50		94	73	68	67	65	64	61	55	47	38	32	74	
SEP 8-160/ 03/KK	45	60		113	91	85	83	80	77	74	66	55	41	39	90	
SEP 8-160/ 03/K	55	75		127	102	96	93	90	88	85	77	67	54	39	90	
SEP 8-160/ 03	55	75		141	111	105	102	99	97	94	87	77	64	39	90	
SEP 8-160/ 04/KK	63	85		159	127	121	117	113	110	105	95	80	64	46	105	
SEP 8-160/ 04/K	75	100		174	138	131	127	124	120	115	105	92	75	46	105	
SEP 8-160/ 04	75	100		185	147	141	137	134	129	125	115	103	85	46	105	
SEP 8-160/ 05/KK	92	125		204	164	155	150	145	140	135	123	105	85	53	121	
SEP 8-160/ 05/K	92	125		216	174	164	160	155	150	145	133	115	95	53	121	
SEP 8-160/ 05	92	125		230	184	174	169	164	159	154	142	125	104	53	121	
SEP 8-160/ 06	110	150		275	220	210	204	197	191	185	171	150	125	60	137	
SEP 8-160/ 07	132	175		324	260	247	240	234	227	220	204	180	151	67	152	
SEP 8-160/ 08	147	200		370	298	283	275	269	261	254	235	207	175	73	168	
SEP 8-160/ 09	170	230		416	335	318	310	303	295	286	264	234	198	80	184	
SEP 8-160/ 10	185	250		455	365	346	337	327	318	306	281	246	205	87	199	

STAINLESS STEEL SUBMERSIBLE SEP 8-160 SERIES



Head losses in plastic pipes

Upper figures indicate the velocity of water in m/sec.

Lower figures indicate head loss in metres per 100 metres of straight pipes.

Quantity of water			PELM/PEH PN 10											
m ³ /h	Litres/min.	Litres/sec.	PELM					PEH						
			25	32	40	50	63	75	90	110	125	140	160	180
			20.4	26.2	32.6	40.8	51.4	61.4	73.6	90.0	102.2	114.6	130.8	147.2
0.6	10	0.16	0.49 1.8	0.30 0.66	0.19 0.27	0.12 0.085								
0.9	15	0.25	0.76 4.0	0.46 1.14	0.3 0.6	0.19 0.18	0.12 0.63							
1.2	20	0.33	1.0 6.4	0.61 2.2	0.39 0.9	0.25 0.28	0.16 0.11							
1.5	25	0.42	1.3 10.0	0.78 3.5	0.5 1.4	0.32 0.43	0.2 0.17	0.14 0.074						
1.8	30	0.50	1.53 13.0	0.93 4.6	0.6 1.9	0.38 0.57	0.24 0.22	0.17 0.092						
2.1	35	0.58	1.77 16.0	1.08 6.0	0.69 2.0	0.44 0.70	0.28 0.27	0.2 0.12						
2.4	40	0.67	2.05 22.0	1.24 7.5	0.80 3.3	0.51 0.93	0.32 0.35	0.23 0.16	0.16 0.063					
3.0	50	0.83	2.54 37.0	1.54 11.0	0.99 4.8	0.63 1.40	0.4 0.50	0.28 0.22	0.2 0.09					
3.6	60	1.00	3.06 43.0	1.85 15.0	1.2 6.5	0.76 1.90	0.48 0.70	0.34 0.32	0.24 0.13	0.16 0.050				
4.2	70	1.12	3.43 50.0	2.08 18.0	1.34 8.0	0.86 2.50	0.54 0.83	0.38 0.38	0.26 0.17	0.18 0.068				
4.8	80	1.33	2.47 25.0	1.59 10.5	1.02 3.00	0.64 1.20	0.45 0.50	0.31 0.22	0.2 0.084					
5.4	90	1.50	2.78 30.0	1.8 12.0	1.15 3.50	0.72 1.30	0.51 0.57	0.35 0.26	0.24 0.092	0.18 0.05				
6.0	100	1.67	3.1 39.0	2.0 16.0	1.28 4.6	0.8 1.80	0.56 0.73	0.39 0.30	0.26 0.12	0.2 0.07				
7.5	125	2.08	3.86 50.0	2.49 24.0	1.59 6.6	1.00 2.50	0.70 1.10	0.49 0.50	0.33 0.18	0.25 0.10	0.20 0.055			
9.0	150	2.50	3.00 33.0	1.91 8.6	1.20 3.5	0.84 1.40	0.59 0.63	0.39 0.24	0.30 0.13	0.24 0.13	0.2 0.075			
10.5	175	2.92	3.5 38.0	2.23 11.0	1.41 4.3	0.99 1.80	0.69 0.78	0.46 0.30	0.36 0.18	0.28 0.09				
12	200	3.33	3.99 50.0	2.55 14.0	1.60 5.5	1.12 2.40	0.78 1.0	0.52 0.40	0.41 0.22	0.32 0.12	0.25 0.065	0.2		
15	250	4.17	3.19 21.0	2.01 8.0	1.41 3.70	1.41 3.70	0.98 1.50	0.66 0.57	0.51 0.34	0.40 0.18	0.31 0.105	0.24 0.06	0.25	0.06
18	300	5.00	3.82 28.0	2.41 10.5	1.69 4.60	1.18 4.60	1.18 1.95	0.78 0.77	0.61 0.45	0.48 0.25	0.37 0.13	0.29 0.085	0.06	0.085
24	400	6.67	3.21 19.0	2.25 8.0	1.57 3.60	1.05 3.60	1.05 1.40	0.81 0.78	0.65 0.44	0.50 0.23	0.39 0.15	0.24	0.25	0.15
30	500	8.33	4.01 28.0	2.81 11.5	1.96 5.0	1.31 2.0	1.31 2.0	0.96 1.20	0.81 0.63	0.62 0.33	0.49 0.21	0.21	0.21	0.21
36	600	10.0	4.82 37.0	3.38 15.0	2.35 6.6	1.57 2.60	1.57 2.60	1.22 1.50	0.97 0.82	0.74 0.45	0.59 0.28	0.28	0.28	0.28
42	700	11.7	5.64 47.0	3.95 24.0	2.75 8.0	1.84 3.50	1.84 3.50	1.43 1.90	1.13 1.10	0.87 0.60	0.69 0.40	0.40	0.40	0.40
48	800	13.3	4.49 26.0	3.13 11.0	2.09 4.5	1.62 2.60	1.62 2.60	1.29 1.40	0.99 0.81	0.78 0.48	0.58	0.58	0.58	0.58
54	900	15.0	5.07 33.0	3.53 13.5	2.36 5.5	1.83 3.20	1.83 3.20	1.45 1.70	1.12 0.95	0.88 0.58	0.69	0.69	0.69	0.69
60	1000	16.7	5.64 40.0	3.93 16.0	2.63 6.7	1.96 3.90	1.96 3.90	1.62 2.2	1.24 1.2	0.96 0.75	0.75	0.75	0.75	0.75
75	1250	20.8	4.89 25.0	3.27 9.0	2.54 5.0	2.02 3.0	2.02 3.0	1.55 1.6	1.22 0.95	0.95	0.95	0.95	0.95	0.95
90	1500	25.0	5.88 33.0	3.93 13.0	3.05 8.0	2.42 4.1	2.42 4.1	1.86 2.3	1.47 1.40	1.17	1.17	1.17	1.17	1.17
105	1750	29.2	6.86 44.0	4.59 17.5	3.56 9.7	2.83 5.7	2.83 5.7	2.17 3.2	1.72 1.9	1.32	1.32	1.32	1.32	1.32
120	2000	33.3	5.23 23.0	4.06 13.0	3.23 7.0	2.48 4.0	2.48 4.0	1.96 2.4	1.47	1.47	1.47	1.47	1.47	1.47
150	2500	41.7	6.55 34.0	5.08 18.0	4.04 10.5	3.10 6.0	3.10 6.0	2.45 3.5	1.96	1.96	1.96	1.96	1.96	1.96
180	3000	50.0	7.86 45.0	6.1 27.0	4.85 14.0	3.72 7.6	3.72 7.6	2.94 4.4	2.24	2.24	2.24	2.24	2.24	2.24
240	4000	66.7	8.13 43.0	6.47 24.0	4.96 13.0	3.92 7.5	3.92 7.5	3.12	2.45	2.45	2.45	2.45	2.45	2.45
300	5000	83.3	8.08 33.0	6.2 18.0	4.89 11.0	3.89	3.89	3.12	2.45	2.45	2.45	2.45	2.45	2.45

The table is based on a nomogram.

Roughness: K = 0.01 mm.

Water temperature: t = 10 °C.

CABLE SELECTION TABLE

Maximum Lengths in Meters (m) for 400V/50Hz, 5% Voltage Drop, 30°C Ambient Temperature IEC Publication 364-5-523 (1983) Table 52-B1																	
DIRECT ON LINE (DOL)																	
Motor Power		Cable Size mm ² , Copper Wire, Rated Insulation at 70°C															
KW	HP	2,5	4	6	10	16	25	35	50	70	95	120	150	185	240	300	400
4	5,5	180	290	430	710												
5,5	7,5	130	210	320	530	830											
7,5	10	90	150	230	390	610	940										
9,3	12,5	80	130	190	320	510	770										
11	15	60	100	160	270	430	650	890									
13	17,5		90	140	230	370	560	770									
15	20		80	120	200	320	490	680	920								
18,5	25			100	160	260	400	540	740	980							
22	30				140	220	340	470	630	840							
26	35				120	190	290	390	540	720	920						
30	40					160	250	340	470	620	790	940					
37	50					130*	200	280	380	500	640	760	890	1020			
45	60						170	240	330	440	570	690	810	940			
52	70						150*	210	290	390	500	600	710	820	980		
55	75						140*	190	270	360	470	560	660	770	910		
60	80							180	250	340	440	530	630	730	870	1010	
67	90							160*	220	300	390	460	550	630	750	860	1000
75	100								200*	270	350	420	490	570	680	780	910
83	111								180*	250	320	390	450	530	630	730	850
85	114									230	290	350	410	480	570	650	750
93	125									220*	280	340	390	460	550	620	720
110	150										220	270	310	360	420	480	550
130	175										200*	240	280	330	390	440	520
150	200											200*	240	280	330	380	440
185	250												210*	250	280	330	390
STAR - DELTA (YΔ)																	
Motor Power		Cable Size mm ² , Copper Wire, Rated Insulation at 70°C															
KW	HP	2,5	4	6	10	16	25	35	50	70	95	120	150	185	240	300	400
4	5,5	270	430	640													
5,5	7,5	190	310	480	790												
7,5	10	130	220	340	580	910											
9,3	12,5	120	190	280	480	760											
11	15	90	150	240	400	640	970										
13	17,5	70	130	210	340	550	840										
15	20	70	120	180	300	480	730	1020									
18,5	25	60	90	150	240	390	600	810									
22	30		70	120	210	330	510	700	940								
26	35		60*	100	180	280	430	580	810								
30	40			90	150	240	370	510	700	930							
37	50				120	190	300	420	570	750	960						
45	60				100	160	250	360	490	660	850						
52	70				90*	150	220	310	430	580	750	900					
55	75					130	210	280	400	540	700	840	990				
60	80					120	190	270	370	510	660	790	940				
67	90					100	180	240	330	450	580	690	820	940			
75	100					90*	150	210	300	400	520	630	730	850	1020		
83	111						130	190	270	370	480	580	670	790	940		
85	114						130*	180	250	340	430	520	610	720	850	970	
93	125						120*	160	240	330	420	510	580	690	820	930	
110	150							130*	190	250	330	400	460	540	630	720	820
130	175								160*	220	300	360	420	490	580	660	780
150	200								150*	190	250	300	360	420	490	570	660
185	250										190*	240	270	310	370	420	490

* For Individual Contactor



SUBMERSIBLE PUMPS & MOTORS

SUTEKSAN EGYPT PUMPS



**EGYPT - CAIRO - 10TH OF RAMADAN CITY
B135-A5 THIRD INDUSTRIAL ZONE
POSTCODE: 44629**



WWW.SUTEKSANEGYPT.COM



**CEO.SUTEKSANEGYPT@GMAIL.COM
SALESDEP.SUTEKSANEGYPT@GMAIL.COM**



**01050500960 - 01033005736
01050500961 - 01050500962**



0554413099 - 0554413080

